

**AIR+)))**  
BeCode

## Assembly and Accessories

### RFID-Transponder



chip card

Mifare Article-No. 7-1-2401  
 Tag-it Article-No. 7-1-2402  
 Legic Article-No. 7-1-2403  
 HID Article-No. 7-1-2404



key fob

Mifare Article-No. 7-1-2501  
 red Article-No. 7-1-2501  
 black Article-No. 7-1-2501-10

### Label-Set



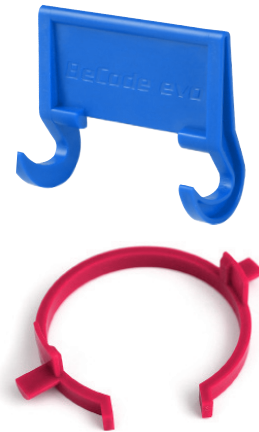
Label-Set  
 (360 stickers for battery lid)  
 Article-No. 7-1-2210

### Assembly Tool AIR+



Assembly Tool  
 Article-No. 7-1-4024  
 1 Nut driver 24 rev. B

### Tool-Set AIR



Set for battery change  
 (Tensioner, Removal Tool Crown)  
 Article-No. 7-1-4107

### Assembly Tools AIR+



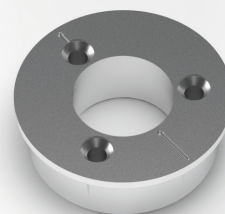
Drive-in Sleeve  
 for wooden doors  
 1 sleeve is needed per  
 installed AIR+  
 Article-No. 7-1-4003



Drive-In Tool  
 for wooden doors  
 Article-No. 7-1-4004

Set Drive-In Sleeves  
 10 pieces, including 1 Drive-In Tool  
 Article-No. 7-1-4005-2

### sleeve to press in



sleeve to press in  
 Art.-Nr. 7-1-4008

### Battery



Battery CR 2477  
 Article-No. 7-1-2110